



ABANDONMENT CASE NUMBER WAB21-0001 (Corstorphine Abandonment)

**Washoe County Planning Commission
March 2, 2021**



Request

Abandonment of a 33-foot wide government patent easement for access and utilities on the south and east sides of the parcel.

Vicinity Map



Overview

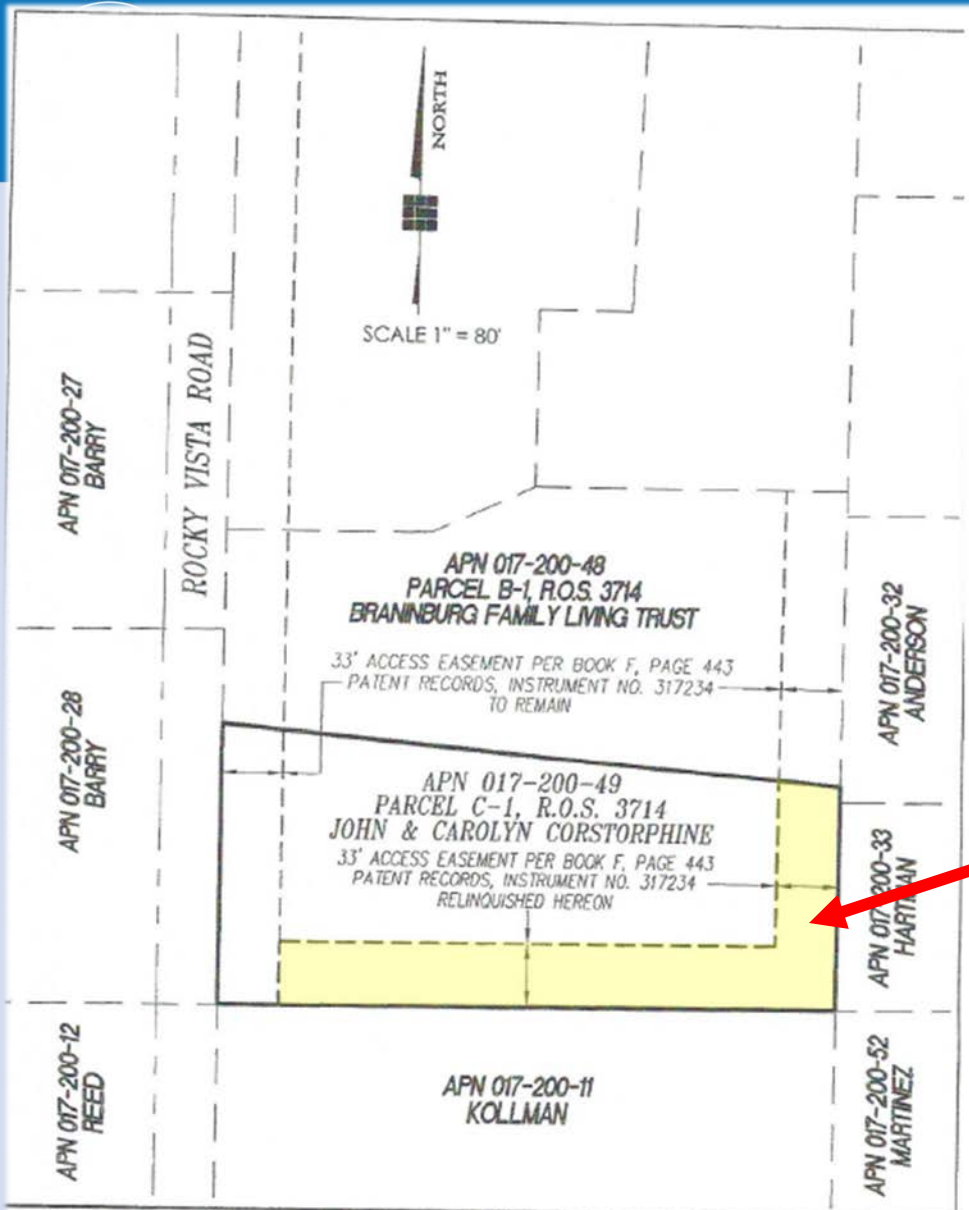


EXHIBIT A-1
ABANDONMENT OF ACCESS EASEMENT
W 1/2, NE 1/4, SE 1/4, SW 1/4 OF SECTION 34,
T. 18 N., R. 20 E., M.D.M.
COUNTY OF WASHOE STATE OF NEVADA

CHRISTY
CORPORATION

1000 Kiley Pkwy | Sparks Nevada 89436
775.502.8552 christy.com



Overview

- easements were established on all sides of the parcels of land
- roads have been established that provide access to all parcels of land
- because roads are now established, the remainder of the easements are not needed
- no change to access to or from any properties



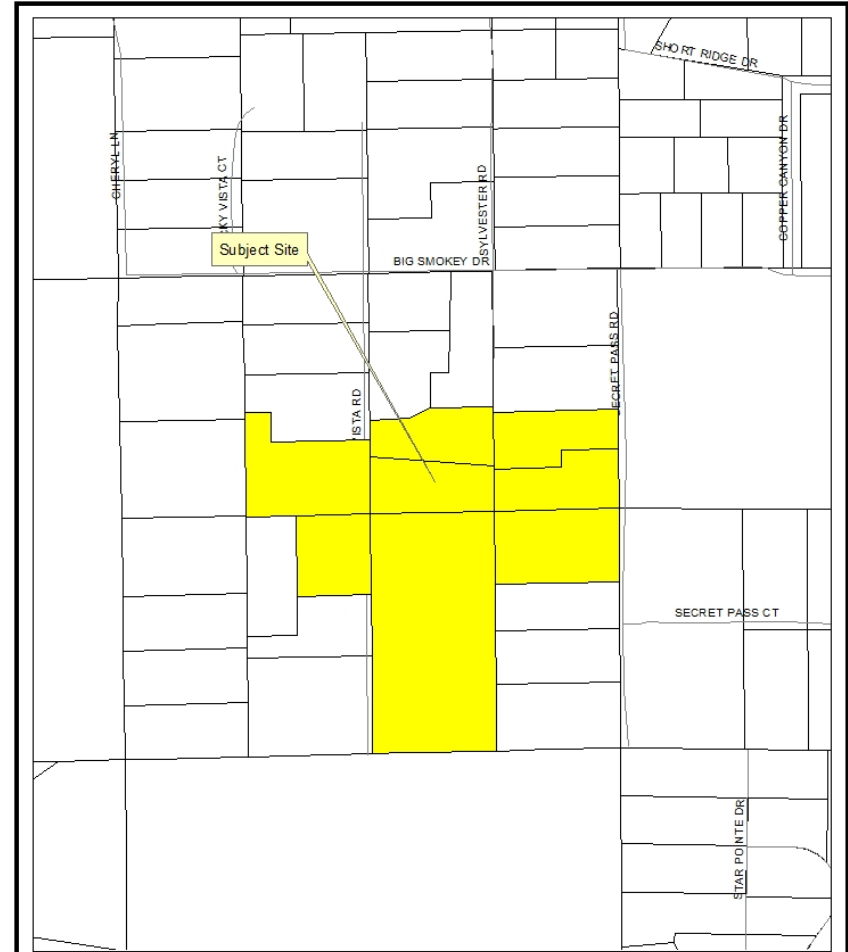
Overhead Photo





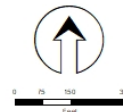
Public Notice & CAB

- Notice sent to 7 adjacent property owners
- Abandonment applications are not forwarded to CABs for review, as they are typically only of interest to adjacent property owners.



Mailing and Vicinity Map

WAB21-0001
7 parcels selected abutting existing easements





Reviewing Agencies

- Nevada Department of Transportation
- Washoe County Community Services Department
 - Engineering and Capitol Projects
 - Planning and Building Division
 - Regional Parks and Open Spaces
- Washoe County Health District
 - Vector-Borne Diseases Program
 - Emergency Medical Services
 - Air Quality Management
- Washoe County Sheriff
- Truckee Meadows Fire Protection District
- Regional Transportation Commission
- Washoe-Storey Conservation District



Abandonment Findings

Comments on each finding are included on page 5 of the staff report.

1. Master Plan. The abandonment or vacation is consistent with the policies, action programs, standards and maps of the Master Plan and the Southwest Truckee Meadows Area Plan; and
2. No Detriment. The abandonment or vacation does not result in a material injury to the public; and
3. Existing Easements. Existing public utility easements in the area to be abandoned or vacated can be reasonably relocated to provide similar or enhanced service.



Possible Motion

I move that, after giving reasoned consideration to the information contained in the staff report and information received during the public hearing, the Washoe County Planning Commission approve, with the conditions included as Exhibit A to this matter, Abandonment Case Number WAB21-0001 for John and Carolyn Corstorphine, having made all three findings in accordance with Washoe County Code Section 110.806.20